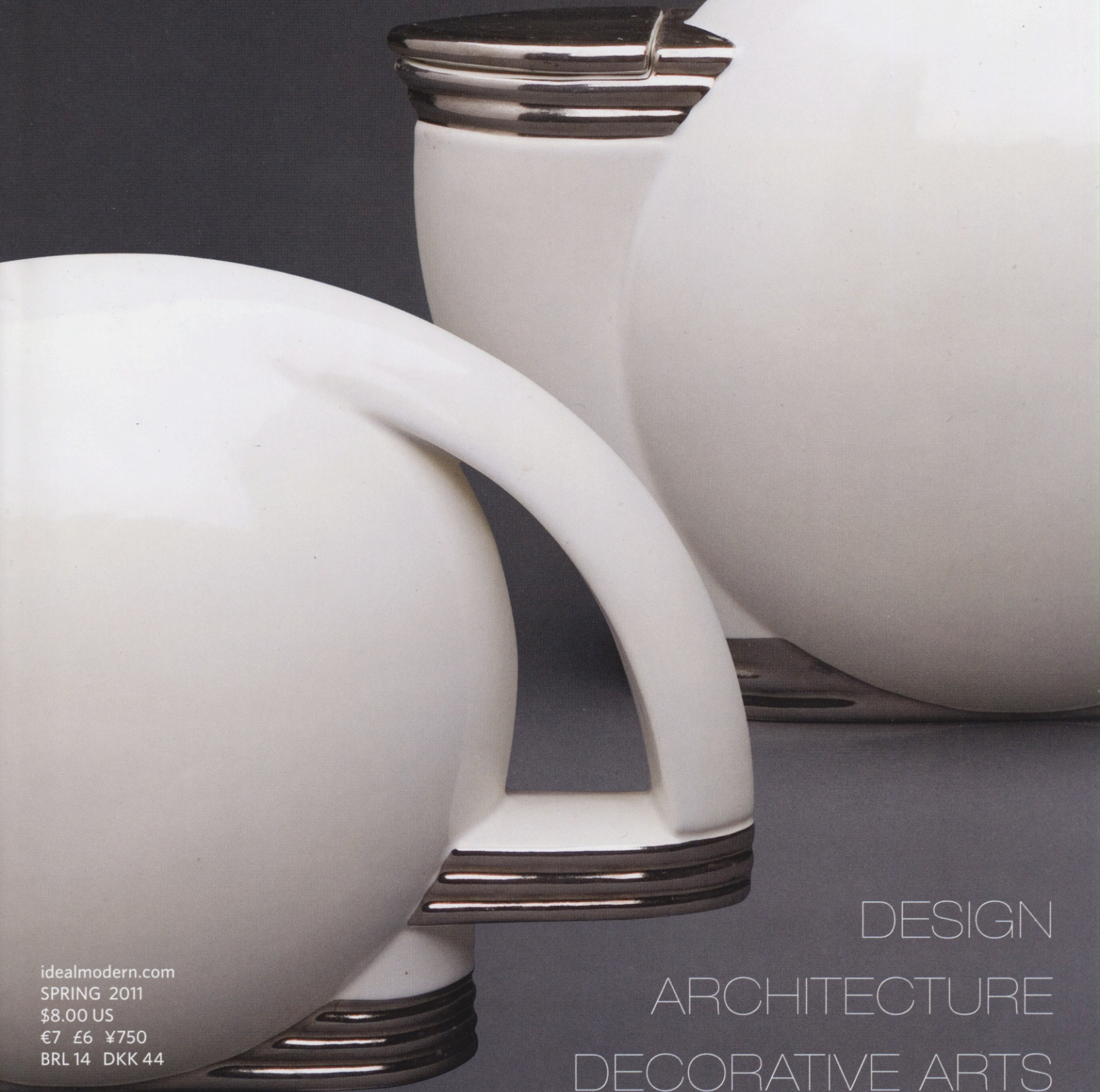


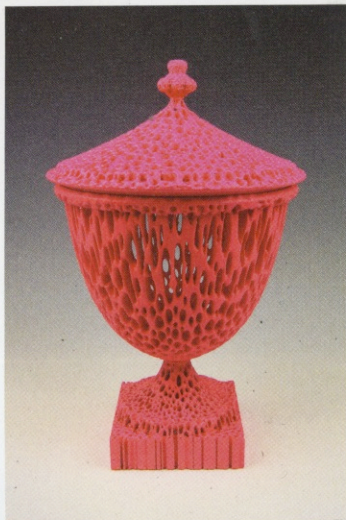
MODERN

MAGAZINE



idealmodern.com
SPRING 2011
\$8.00 US
€7 £6 ¥750
BRL 14 DKK 44

DESIGN
ARCHITECTURE
DECORATIVE ARTS



◀ DRAMATIC CERAMICS

"I fell in love with Michael Eden's work about two years ago when I saw his pieces in one of London dealer Adrian Sassoon's catalogues, and subsequently at a SOFA [Sculpture Objects & Function Art] expo in New York. Eden's work is based on classical inspirations, but created with state-of-the-day technology. His 'Wedgwoodn't' series is an ode to the polite delicacy of eighteenth-century ceramics, yet rendered in a Goth, macabre way: the pieces have the brittle texture of bone, and their surfaces seem decayed and eroded. Rendered in colors from the classic—black or Wedgwood blue—to the outrageous—shocking pink, chartreuse—they

are unique. I'm looking forward to seeing Eden's work at the SOFA New York show in April.

JAMIE DRAKE,
interior designer

▼ PLEATED LIGHT

"The 'Eclipse' lamp by Mauricio Klabin is a mix of sophistication and simplicity. It is serious design that makes you smile. The way it can be folded open or closed down makes me think of a gentle giant snail that can appear and disappear as in a fairy tale. I love the lamp's originality, which makes you realize there are still many new forms to discover in design. It is carried by the New York store Espasso, a place that celebrates the beauty of Brazilian design from today and the near past."

DIANE VIÑOLY,
interior designer



▲ CACHAÇA AND CACHET

"The beauty of the city of São Paulo is unconventional. At first, all seems chaotic, but when you get past this impression, the city reveals itself to be interesting, vibrant, and even poetic. We are looking forward to the first Design São Paulo exposition, which runs from June 8 to 12. An event like this is timely and calls attention to the recent efforts of the city to foster emerging talent. The market for design in Brazil is still unstructured, and we hope that the show creates an interest and helps spread the word about the new and emerging culture of Brazilian design."

HUMBERTO AND FERNANDO CAMPANA,
designers (their "Multidão" stool, designed in 2008,
is shown above)



◀ MODERN PRIMITIVES

"Paraguayan architect and designer Pedro Barrail has a fascination with the native peoples of the Amazon basin. His new collection of one-of-a-kind chairs and tables combines simple modern lines with the primitive 'tattoo' designs of one of the most remote tribes of the region. The wood-burned motifs are based on what these people see around them in the jungle, from insects and mammals to vegetation, and provides an amazing window into their day-to-day existence. I love the honesty and creativity of these pieces, which are at once both functional and an art form."

PHILIP GORRIVAN,
interior designer